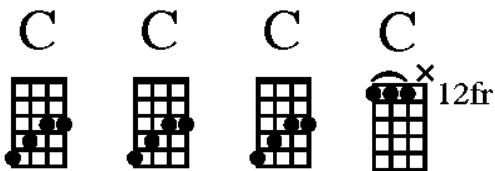


She caught The Katy

Intro



C G7 C
She caught The Katy, and left me a mule to ride

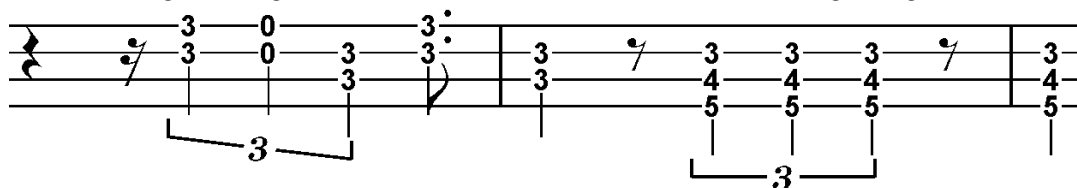
C G7 C
She caught The Katy, and left me a mule to ride

C C7
Now my baby caught The Katy, left me a mule to ride
F F#dim

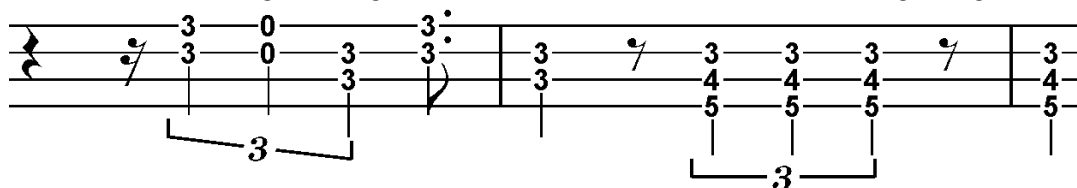
The train pulled out I swung on behind

C G7 C
Crazy 'bout her, that hard headed woman of mine

C G7 C
Man, my baby's long, great gosh almighty my she tall



C G7 C
You know my baby long, great gosh almighty my baby tall



C C7
my baby she's long, my baby she tall

F F#dim
She sleeps with her head in the kitchen, her big feet's out in the hall

C G7 C
Crazy 'bout her, that hard headed woman of mine

mid 8

F

Well I love my baby, she's so fine

C

But I wish she'd come and see me some time

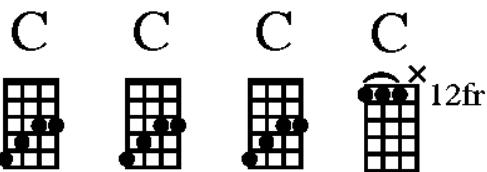
Bb

She don't believe in our love, look whata hole I'm in

G7

She don't believe what I'm sayin', kid look whata shape I'm in

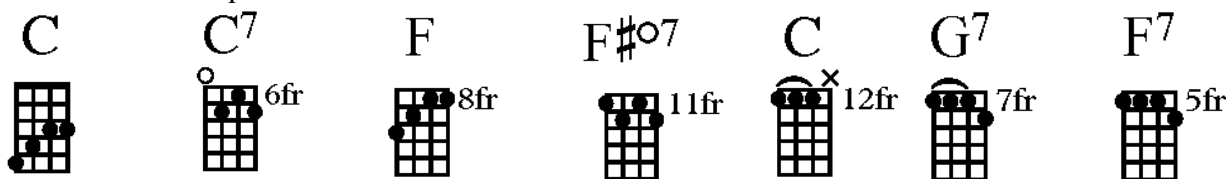
Intro



solo

C	G7	C		C	G7	C	
C	C7	F	F#dim	C	G7	F	C

Horn bit chord shapes



C She caught The Katy, and left me a mule to ride

C G7 C She caught The Katy, and left me a mule to ride

C C7 Now my baby caught The Katy, left me a mule to ride

F F#dim The train pulled out I swung on behind

C G7 F C Crazy 'bout that hard headed woman, hard headed woman of mine

Outro

C	G7	F	C		C stop	C stop	C stop
---	----	---	---	--	--------	--------	--------

